

BOLT™

CRANES & RIGS

FASTEST CAMERA ROBOT IN THE WORLD!



PAYLOAD
CAPACITY (KG)



MAXIMUM
LENS HEIGHT (M)

FASTEST MOTION CONTROL ARM
IN THE WORLD!

INTEGRATED CAMERA CABLING
THROUGH ARM

MOVES 12 M/S
ARM WITH TRACK

POWERFUL, HIGH TORQUE
LENS MOTORS

The Bolt High-Speed Cinebot™ is the fastest of its kind – capturing images in crisp focus that would be impossible by hand or any other method. Whether shooting commercials, tabletop work, film or television, the Bolt adds an entirely new perspective to filming.



A Nikon Company



MARK ROBERTS MOTION CONTROL

BOLT™ SPECIFICATIONS



TURNTABLES

Synchronised motion with external triggers and model movers for extreme precision timing.



PORTABLE

Portable, lightweight robotic unit, designed to be set-up and ready for shooting in under an hour.



TIMECODE | LIGHTING

Trigger from timecode. Control DMX Lighting.



TIMELAPSE

Create incredible timelapse with dynamic movement and feel.



REPEATABLE

Every camera move under complete control – precisely repeatable.



TARGET TRACKING

Define location of your object in space, to simplify any complex move.



LENS CONTROL

High speed, precise control of zoom, iris & lens. Fastest & most powerful motors in the world.



MAYA

Take moves planned in Maya and feed them into the Bolt – or interface to augmented or virtual reality in real-time.

OPERATING ENVELOPE

Maximum Height	3.5m / 11'5"
Lowest Position	0m / 0'
Maximum reach (from rotate centre)	2.0m / 6'6"

RIG PERFORMANCE

Arm Arc Move	7 m/s max speed at camera
Arm With Track	12 m/s max speed at camera
Track	5 m/s max speed at camera
Rotate	-160° to +160° travel @ 240°/s
Lift	-40° to +210° travel @ 240°/s
Arm	-60° to +220° travel @ 300°/s
Pan	-265° to +265° travel @ 350°/s
Tilt	-210° to + 10° travel @ 350°/s
Roll	-720° to +720° travel @ 870°/s

PRACTICAL SHOOTING SPEEDS

Vertical	1m (3'3") vertical movement /0.5s
Horizontal	1m (3'3") horizontal movement /0.5s
Arc	Complete 180° arc with 75cm (2'5") radius /1.5s Complete 180° arc with 45cm (2'5") radius /1s

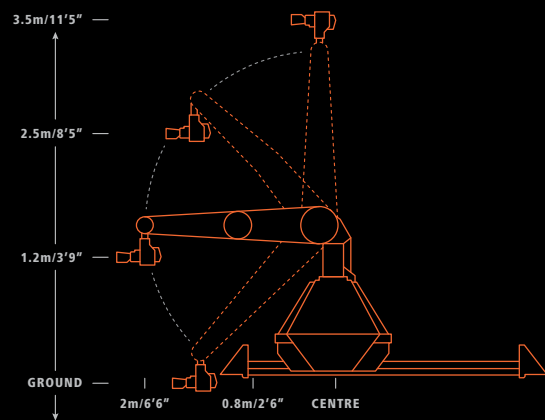
RIG WEIGHTS

Bolt Rig	600kg / 1323lbs
Maximum camera payload	20kg / 44lbs

Note: counter weights may be required depending on the shot and length of track

POWER CONNECTION

Power requirements	3x 400 volts, 32 amps, 50-60Hz
Generator	3k VA (Bolt) 14k VA (Bolt on track)



MARK ROBERTS MOTION CONTROL

MARK ROBERTS MOTION CONTROL

TELEPHONE: +44 (0)1342 838000

EMAIL: info@mrmoco.com

www.mrmoco.com/bolt

A Nikon Company

